

CREATING SUSTAINABLE LANDSCAPES
THROUGH EDUCATION, DESIGN AND
LONG-TERM PLANNING

Parks

Schools

Colleges

Golf Courses

Fairgrounds

Courthouses

Libraries

Trails

Streetscapes

Entryways

Neighborhoods

Downtowns

Nature Centers

Public Gardens

Institutions

Commercial

Industrial

Healthcare

The Nebraska Statewide Arboretum is a nonprofit organization devoted to improving Nebraska's green spaces. Since its inception in 1978, NSA has assisted with public landscape projects in nearly 300 different Nebraska communities. The professional staff of NSA is available to share this landscape experience through a unique consultation service offered to managers and caregivers of landscapes across the state.

By offering this service, NSA hopes to improve the stewardship of Nebraska's most important and visible landscapes. We believe that successful landscapes beautify and strengthen the whole community. Our consultations focus on long-term sustainability and a better environment through proper plant selection, design and maintenance practices.



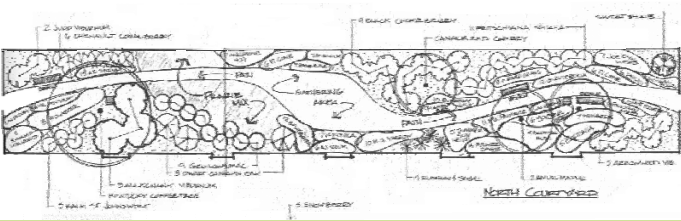
P.O. Box 830715
University of Nebraska
Lincoln, NE 68583-0715
Phone: 402.472.2971 / Fax: 402.472.2971
arboretum.unl.edu

Nebraska
Statewide
Arboretum

PROFESSIONAL LANDSCAPE
& PUBLIC GARDEN
CONSULTING



*making every town
a garden*



MENU OF SERVICES

MAKE A HEALTHIER COMMUNITY

- Being in nature lowers stress levels.
- Highly greened communities have a 52% lower crime rate.
- Green spaces encourage relationships between neighbors.
- Plants provide a more livable environment by controlling physical factors such as temperature, noise and pollution.
- Landscaping helps create a positive community image.
- Kids living in green environments show better cognitive development and function, particularly children with attention deficit disorder.
- Community greening efforts create opportunities for people to work together and empower citizens to do more.
- Greener, well-maintained communities are better for business.
- Green space in urban environments helps people cope and express more optimism despite poverty.



Facts taken from the human-environment research laboratory, University of Illinois at Urbana, and the Community Gardening

COMMUNITY GREENING

- Assist communities and organizations with development of proactive public greening strategies.
- Assist with tree inventories and evaluations, street tree recommendations, neighborhood greening strategies and ordinance modifications.
- Identify opportunities for new green space developments.
- Identify funding sources and other economic development opportunities.
- Assist in the development and promotion of sustainable living.

LANDSCAPE PLANNING AND DESIGN

- Development of graphical concept plans and/or planting designs.
- When necessary, designs will be developed in consultation with other design professionals. Projects with significant grading changes or hardscape needs may be referred specifically to landscape architects or engineers.

LANDSCAPE INVENTORY AND EVALUATION

- Inventory and analysis of existing trees, shrubs and other landscape plants.
- Development of site maps.
- Analysis of existing landscape design and function with general recommendations for modifications and improvements.

PLANT SELECTION AND PROCUREMENT

- Provide site-specific landscape plant recommendations.
- Assist in obtaining plant material from qualified nurseries.

LANDSCAPE MAINTENANCE

- Conduct analysis of current maintenance programs and develop site-specific maintenance guides.
- Assist in raising landscape maintenance knowledge and skills of managers and caregivers through workshops and one-on-one training sessions.

COMMUNITY OUTREACH AND EDUCATION

- Help raise public awareness and appreciation of landscape benefits.
- Assist in development of brochures and other educational materials.
- Assist with website development or improvements, including such things as content, mapping, graphics, etc.
- Help organize and promote meetings, public events and celebrations.

SERVICES BY RETAINER

- NSA can provide ongoing assistance and consultation by retainer.

CONSULTATION RATES

Consultation fees are kept as low as possible and are based on an hourly rate for each staff person involved. Travel costs may also apply. Contact NSA for the current fee and travel cost structure.

AFFILIATE SITE AND MEMBER DISCOUNT

NSA Affiliate Sites, Associate Members receive a 10% discount on consultation fees. Other discounts may also apply.

For More Information:

Phone: (402) 472-2971

Email: jevertson1@unl.edu